

Apartment

FLAT 2 HERRING HOUSE, 18 GLOUCESTER STREET, LONDON, SW1V 2DN

Per Week

£595 Per

FEATURES

- Porter
- Communal Water
- Lift
- Furnished



TUCKERMAN
ESTATE AGENTS
PROPERTY PROFESSIONALS

2 Bedroom Apartment located in London

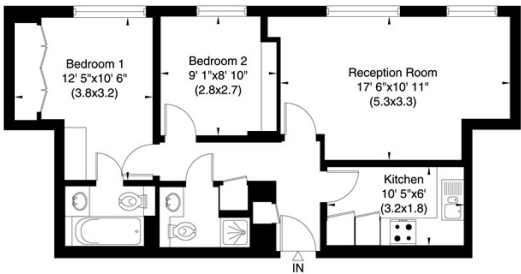
A well presented two bedroom apartment located on the lower ground floor in this impressive period development.

Call us on
020 7222 5510
info@tuckermanresidential.co.uk
www.tuckermanresidential.co.uk


Council Tax Band
F

2 HERRING HOUSE
GLOUCESTER STREET
LONDON SW1

Gross Internal Area: 55 Sq. metres
590 Sq.feet



Lower Ground Floor

Energy Efficiency Rating		
	Current	Potential
Very energy efficient - lower running costs		
(92 plus) A		
(81-91) B		
(69-80) C		
(55-68) D	58	60
(39-54) E		
(21-38) F		
(1-20) G		
Not energy efficient - higher running costs		
England & Wales	EU Directive 2002/91/EC 	

Agents Note: Whilst every care has been taken to prepare these particulars, they are for guidance purposes only. All measurements are approximate and are for general guidance purposes only and whilst every care has been taken to ensure their accuracy, they should not be relied upon and potential buyers are advised to recheck the measurements.